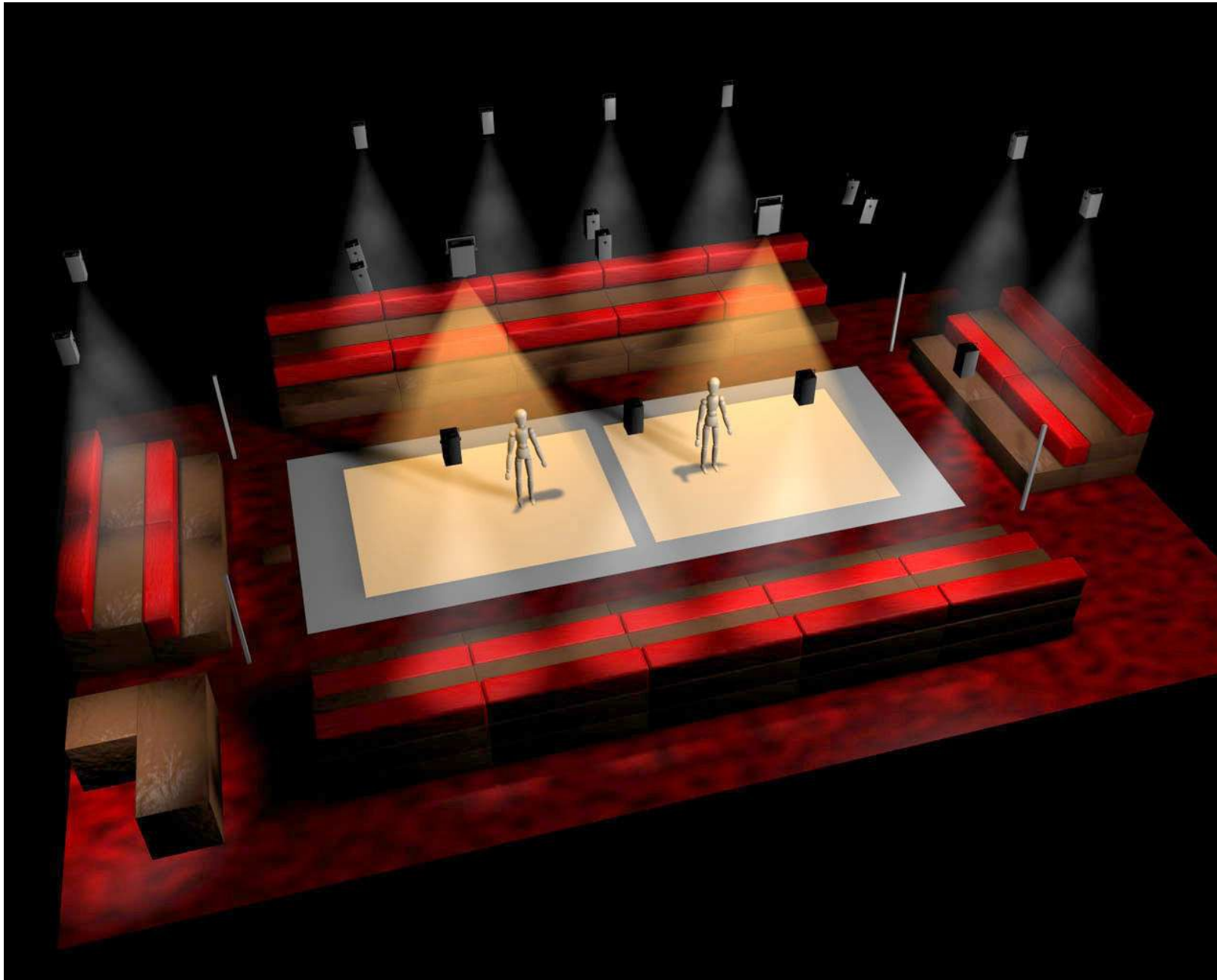
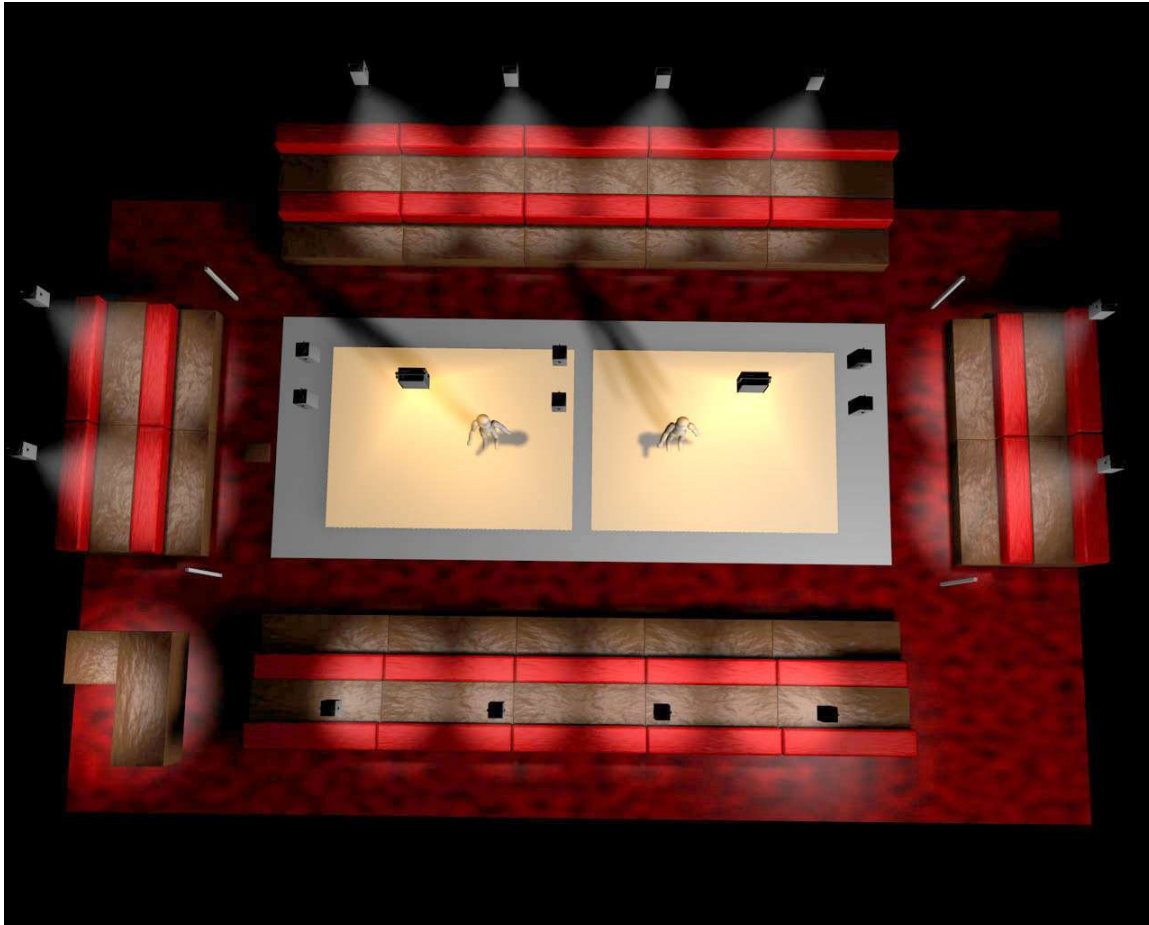


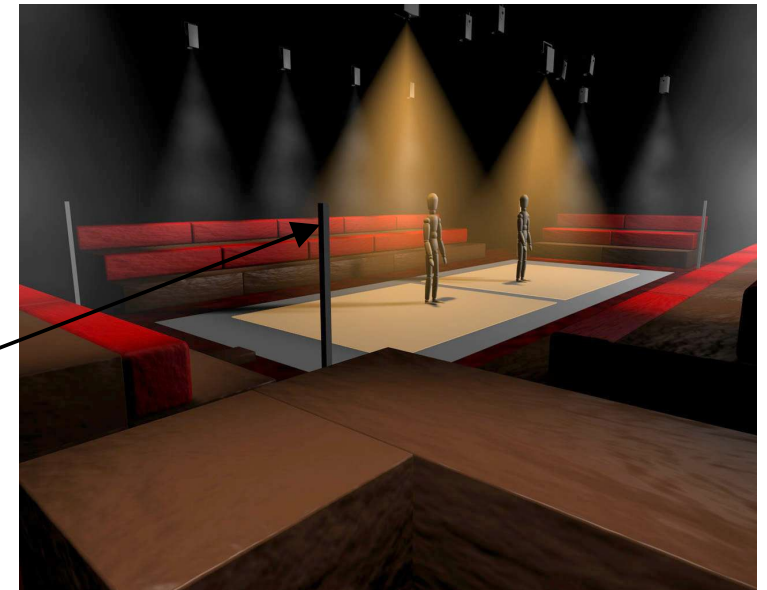
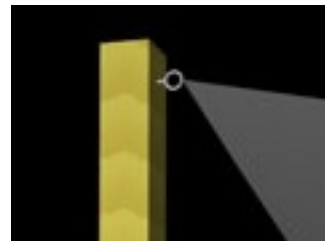
Saltbush

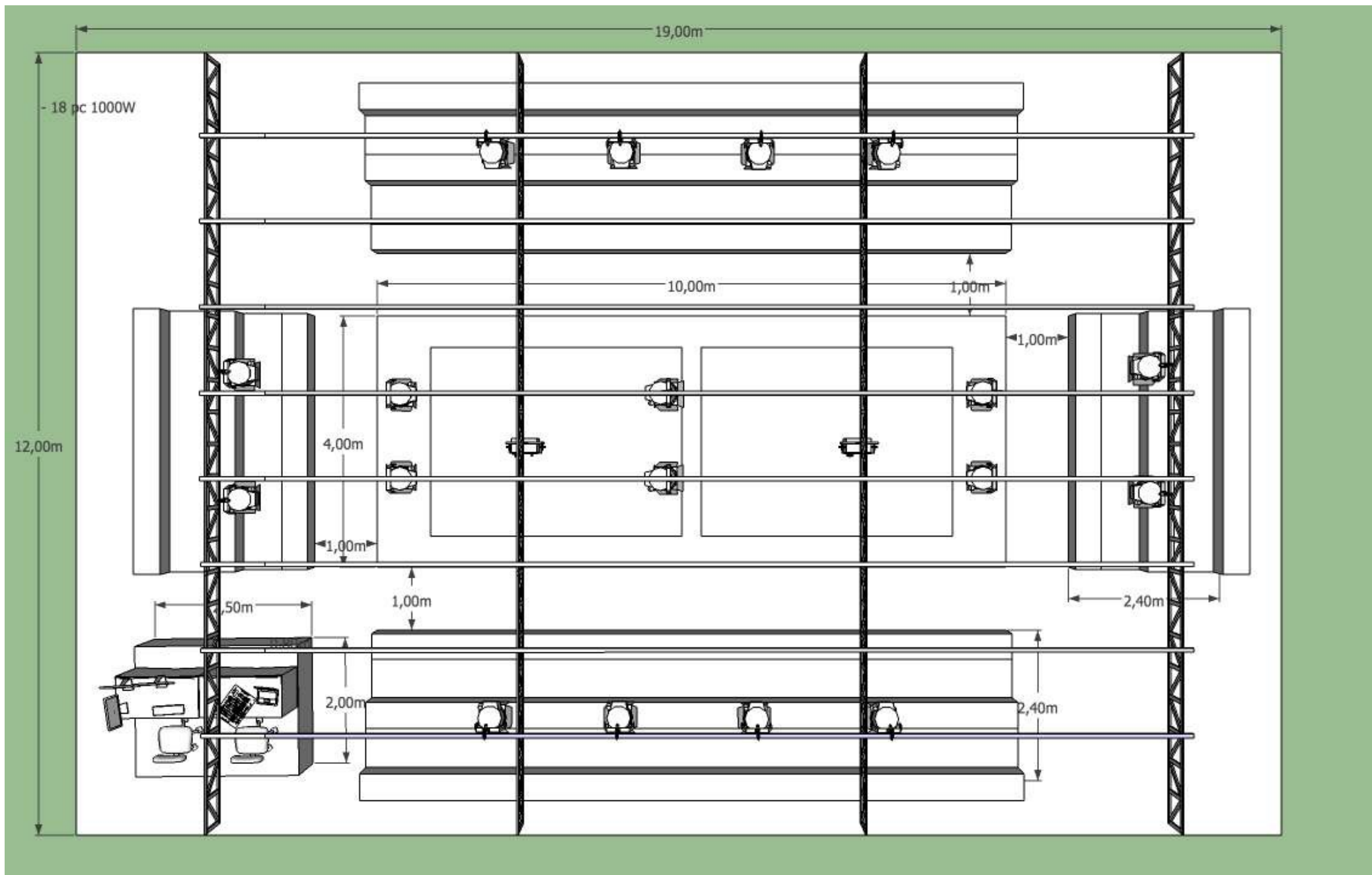
plan and technical requirement

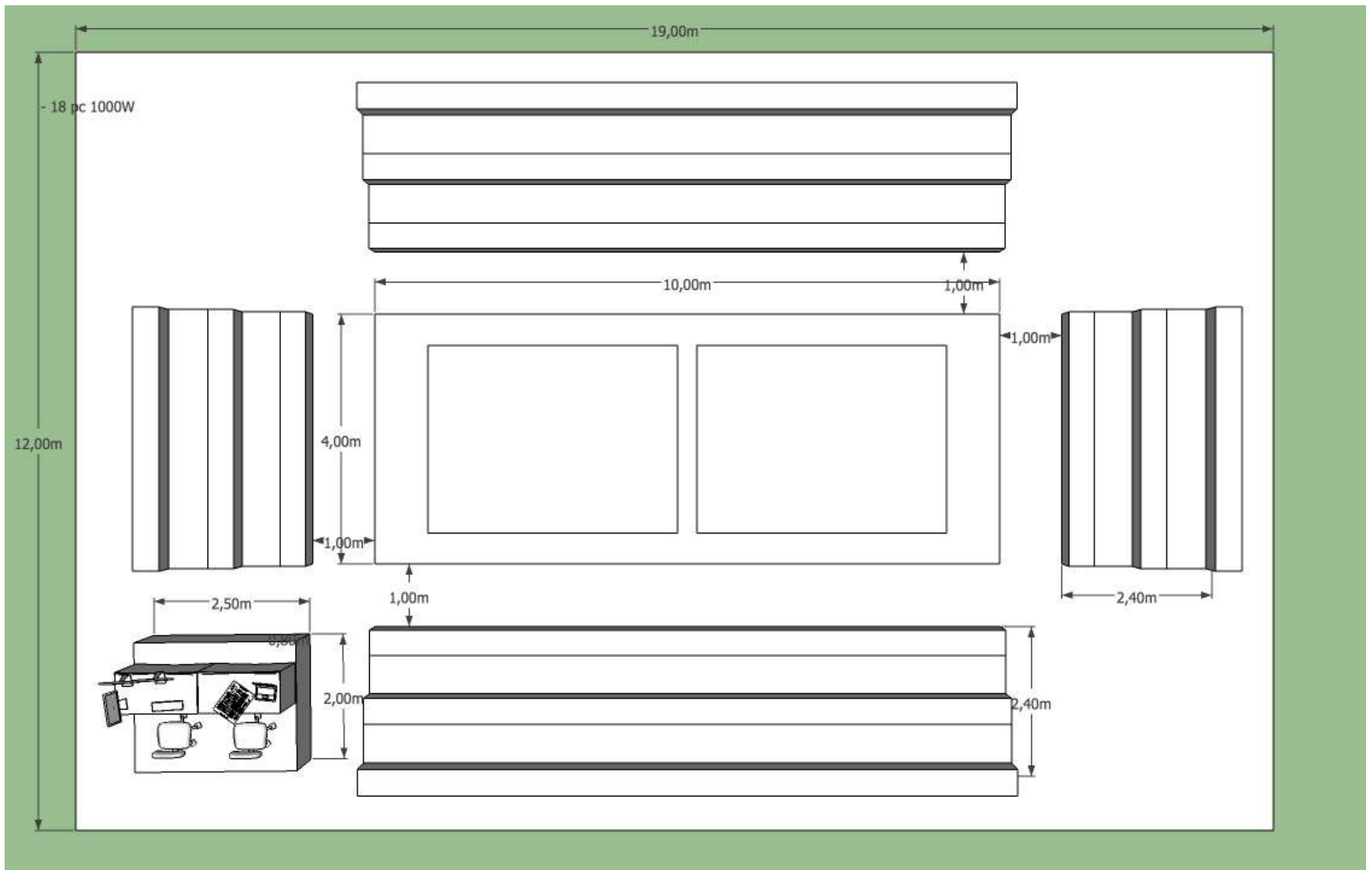




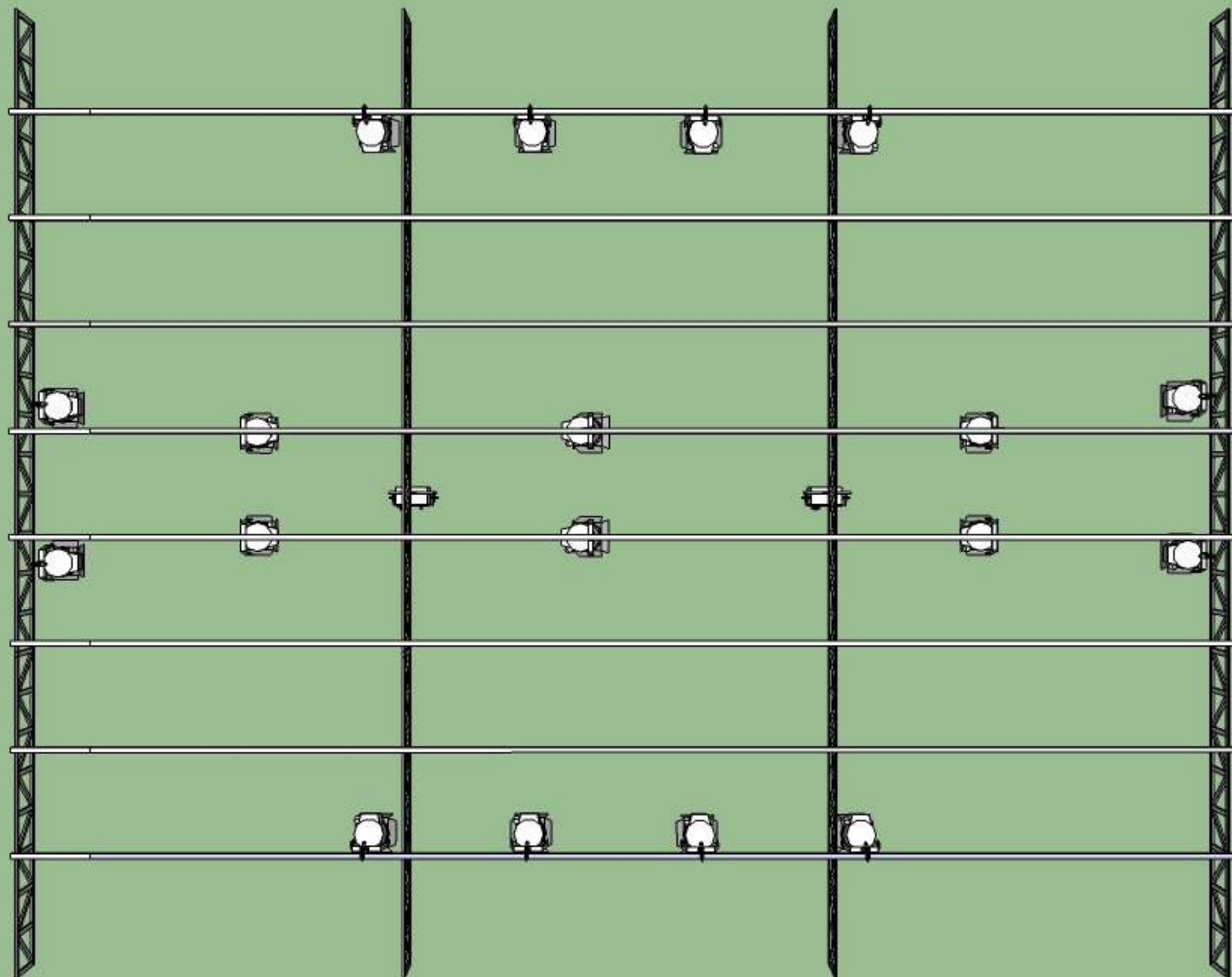
Timber post painted black with 1 eyelet and fixed to the stage floor at the diagonal corners of the carpet. This is to hook a gauze cloth which hangs loosely over the entire projection surface







- 18 pc 1000W



SALTBUSH

Technical Requirements

STAFF

2 x technicians during load in and load out

LIGHT

18 x PC 1000 watt with barn doors (12 for audience, 6 for flood)

4 x PC or Profiles for the entrance

2 x dimmers 6 channels (2 kw each channel)

1 x lighting console/desk with 12 channels

1 x console table (200/250 x 60/80 cm)

2 blue gels 132

power lines and cables

In some spaces it is necessary to provide more lights such as profiles or PCs to create an entrance-light situation to get the audience into the space safely.

SOUND

4 x speakers on stands at the 4 corners of the carpet or hung from the rig

1 or 2 x subwoofers

2 x D.I. boxes

1 x soundmixer minimum 6 channels

amplifiers and cables

Sound and lighting consoles are on the stage close to the scenery.

CARPET

White dance floor in rolls: thickness 1.7mm, weight 1750 gr/mq, composition 100% PVC, width 140 cm, length 30m (3 stripes of 10m)

you can use other sizes, in any case the surface to cover is 10m x 4.20/5m

(like this <http://www.peroni.com/ENG/scheda.php?id=496&key=MAT>)

Floor lining: thickness 2/3 mm, composition 100% polyethylene, same dimension of the white dance carpet

(like this <http://www.ikea.com/au/en/catalog/products/00018076>)

3 x rolls of white gaffer tape to fix the white dance floor (3 rolls each setup)

1 x roll of black gaffer tape

cleaning equipment for the carpet and floor

OTHER

2 x monitor video lcd 14/15" with cables, vga input

1 x monitor video lcd 17/19" with cables, dvi or vga input

SEATING

For up to 100 people – children from 4 years old and accompanying adults. The seating should be bleachers or a series of interconnected risers which allow the children easy access to the carpet with enough room for the adults to sit in the back rows. TPO will provide diagram which show how the seating should be constructed and positioned

SPACE

An empty space/stage (minimum 12 x 8 m) with two bars at 5m (see the plan) for the videoprojectors

The space must be darkened and warm and should be empty without wing flats.

The walls should be with black curtains/drops.

The floor must be without holes and screws.

The console table should be raised up about 50/100 cm from the floor.

An empty space for the introduction, see below.

IMPORTANT: the lens of the videoprojectors must be at 4.10 m (20cm +/-),

so the bar to hang up the videoprojectors must be at 4.80 (20cm +/-)

FEATURES

around 100 spectators, adults and children (4-8 years old)

Audience has to take off the shoes, this should be done outside the performing space.

In a space in the foyer, one performer will give a short introduction to the show – for this we need to place a 4x3 m carpet with a printed Australian map on the floor for all to gather around.

The presenter needs to supply 4 timber posts h 150cm x w 10 cm x d 10cm painted black with 1 eyelet each and fixed to the stage floor at the diagonal corners of the carpet. This is to hook a gauze cloth which hangs loosely over the entire projection surface (see the image on the map).

Load in: 8 hours

Load out: 4 hours